

~~~~~  
**PART A (UNIFORM INSPECTION)**

| Seq. | Words of Command / Event                                                                         | Remarks                                                                                                                                                                                                                                                       |
|------|--------------------------------------------------------------------------------------------------|---------------------------------------------------------------------------------------------------------------------------------------------------------------------------------------------------------------------------------------------------------------|
| A1.  | <i>The Colour Party marches on for inspection.</i>                                               | <ul style="list-style-type: none"> <li>● The Colour Party should be formed up (refer to figure 1), and the Colour should be uncased and carried.</li> <li>● Colour Party Commander should stand at the 'Squad will Advance' and centered position.</li> </ul> |
| A2.  | <i>Colour Party, by the centre, quick MARCH</i>                                                  | <ul style="list-style-type: none"> <li>● The Colour Party marches forward and halt at the designated position facing to the 'Squad will Advance' in the position of Attention.</li> </ul>                                                                     |
| A3.  | <i>Colour Party, HALT</i>                                                                        |                                                                                                                                                                                                                                                               |
| A4.  | Colour Party, inward DRESS                                                                       | <ul style="list-style-type: none"> <li>● Colour Party Commander turns about facing to the Colour Party.</li> <li>● The Colour should be carried.</li> </ul>                                                                                                   |
| A5.  | Eyes FRONT                                                                                       | <ul style="list-style-type: none"> <li>● Colour Party Commander turns about facing to the 'Squad will Advance'.</li> </ul>                                                                                                                                    |
| A6.  | Colour Party, order STAFF                                                                        | <ul style="list-style-type: none"> <li>● Ensign orders the Colour from the Carry.</li> </ul>                                                                                                                                                                  |
| A7.  | "Good morning Sir / Madam, No. "X" Squad is now ready for your inspection, Sir / Madam, please." | <ul style="list-style-type: none"> <li>● After a regulation purse, Colour Party Commander reports to the Judge-in-charge for inspection.</li> </ul>                                                                                                           |
| A8.  | <i>The judges start inspecting the squad.</i>                                                    | <ul style="list-style-type: none"> <li>● All personnel should adopt the position of Attention until being instructed.</li> </ul>                                                                                                                              |
| A9.  | "Sir / Madam, may I have your permission to carry on, Sir / Madam, please."                      | <ul style="list-style-type: none"> <li>● Colour Party Commander reports off inspection.</li> </ul>                                                                                                                                                            |
| A10. | Colour Party, shoulder STAFF                                                                     | <ul style="list-style-type: none"> <li>● Ensign carries the Colour from the Order.</li> </ul>                                                                                                                                                                 |
| A11. | <i>Colour Party, by the centre, quick MARCH</i>                                                  |                                                                                                                                                                                                                                                               |
| A12. | <i>The squad marches off and waits for the next part.</i>                                        |                                                                                                                                                                                                                                                               |

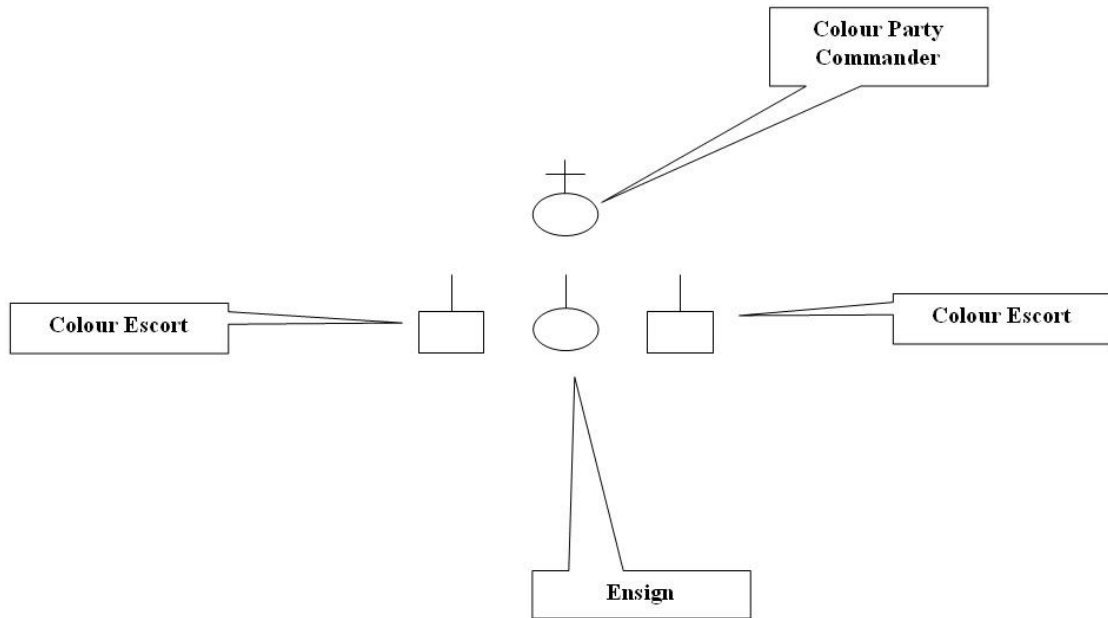
~~~~~  
PART B (FOOTDRILL COMPETITION)

Seq.	Words of Command / Event	Remarks
B1.	<i>The Colour Party should standby at the designated positions.</i>	<ul style="list-style-type: none"> ● The Colour Party should be formed up at the rear flank of the Parade Ground facing the front flank. ● Colour Party Commander should stand at the 'Squad will Advance' and centered position. ● The Colour should be uncased and carried.
B2.	"Good morning Sir / Madam, No. "X" Squad is now ready for competition, Sir/ Madam, please."	<ul style="list-style-type: none"> ● As per the inspection of the Chief Judge, Colour Party Commander marches to the Chief Judge and reports for the Footdrill Competition. ● After report, Colour Party Commander returns to the Colour Party and faces to the 'Squad will Advance'.
B3.	Get on, PARADE	<ul style="list-style-type: none"> ● The Colour Party marches march forward, halt on the fifth pace ("4 paces plus 1-2") at the designated position facing to the 'Squad will Advance' in the position of Attention.
B4.	Colour Party, inward DRESS	<ul style="list-style-type: none"> ● Colour Party Commander turns about facing to the Colour Party. ● The Colour should be carried.
B5.	Eyes FRONT	<ul style="list-style-type: none"> ● Colour Party Commander turns about facing to the 'Squad will Advance'.
B6.	Colour Party, order STAFF	<ul style="list-style-type: none"> ● Ensign orders the Colour from the Carry.
B7.	Stand at EASE	
B8.	Squad SHUN / ALERT / ATTENTION	<ul style="list-style-type: none"> ● Colour Party Commander should resume the position of Attention before issuing the command.
B9.	General salute, SALUTE	<ul style="list-style-type: none"> ● Colour Party Commander salutes to the front. ● After lowering the Colour, Ensign resumes the Colour at the carry in regulation pause.
B10.	Colour Party, at the halt, right FORM	<ul style="list-style-type: none"> ● Refer to Figure 2

Seq.	Words of Command / Event	Remarks
B11.	Quick MARCH	● Refer to Figure 3
B12.	Colour Party will march past in quick time, by the centre, quick MARCH	● Refer to Figure 4
B13.	Eyes RIGHT	● Colour Party Commander salutes to the right whilst Ensign lets the Colour fly.
B14.	Eyes FRONT	● Ensign catches the Colour.
B15.	Colour Party HALT	
B16.	Colour Party, at the halt, left FORM	● Refer to Figure 5
B17.	Quick MARCH	● Refer to Figure 6
B18.	Colour Party, inward DRESS	● Colour Party Commander turns about facing to the Colour Party. ● The Colour should be carried.
B19.	Eyes FRONT	● Colour Party Commander turns about facing to the 'Squad will Advance'.
B20.	General salute, SALUTE	● Colour Party Commander salutes to the front. ● After lowering the Colour, Ensign resumes the Colour at the carry in regulation pause.
B21.	"Sir/ Madam, may I have your permission to march off, Sir/ Madam, please."	● Colour Party Commander seeks for permission to march off. ● Upon permission granted, Colour Party Commander marches to the position in front of Ensign, and then faces to the "Squad will Advance".
B22.	Colour Party, at the halt, right FORM	● Refer to Figure 2
B23.	Quick MARCH	● Refer to Figure 3
B24.	Colour Party will march past in quick time, by the centre, quick MARCH	● Refer to Figure 7
B25.	Eyes RIGHT	● Colour Party Commander salutes to the right whilst Ensign lets the Colour fly.
B26.	Eyes FRONT	● Ensign catches the Colour.

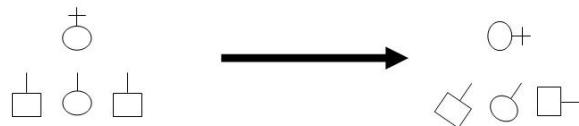
Seq.	Words of Command / Event	Remarks
B27.	<i>The Colour Party marches to the exit.</i>	

Figure 1



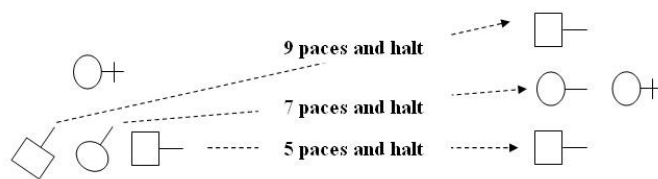
Not to scale

Figure 2



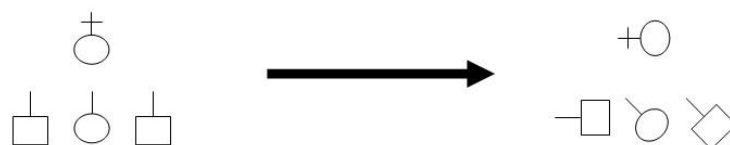
Not to scale

Figure 3



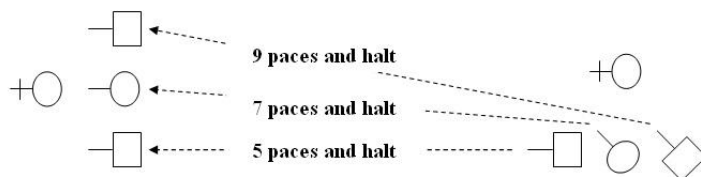
Not to scale

Figure 4



Not to scale

Figure 5



Not to scale

Figure 6

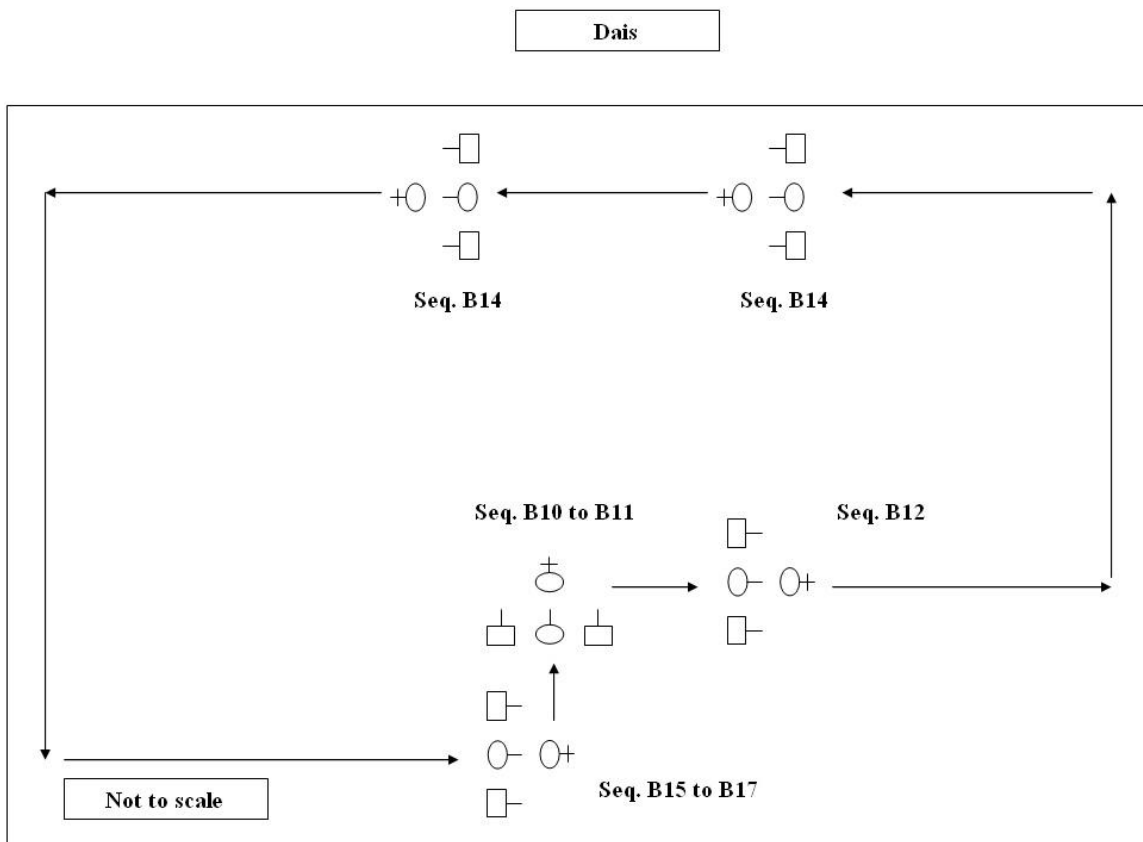


Figure 7

